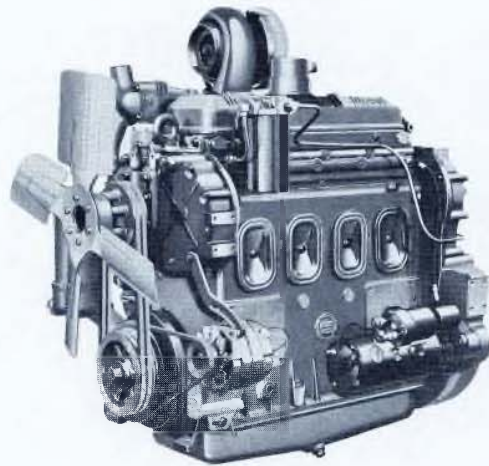


DETROIT DIESEL Series 71

Industrial Model 4-71N/T 114-211 HP



General Specifications

Basic Engine	4-71N	4-71T
Model	1043-7100	1043-7301
Number of Cylinders	4	4
Bore and Stroke	4.25 in × 5 in (108 mm × 127 mm)	4.25 in × 5 in (108 mm × 127 mm)
Displacement	284 cu in (4.7 liters)	284 cu in (4.7 liters)
Engine Type	2 cycle Inline	2 cycle Inline
Compression Ratio	18.7 to 1	17 to 1
Engine Heat Rej.	3820 BTU/min (67.1 kW) @ 114 BHP	5700 BTU/min (100.2 kW) @ 211 BHP
Engine Coolant Capacity	14 qt (13.2 liters)	14 qt (13.2 liters)
Exhaust Temperature	780°F (416°C) @ 114 BHP	720°F (382°C) @ 211 BHP
Total Engine Oil Capacity	22 qt (20.8 liters)	22 qt (20.8 liters)
Dimensions (approx.)		
Length	42 in (1067 mm)	44.4 in (1128 mm)
Width	29.4 in (747 mm)	31.1 in (790 mm)
Height	39.2 in (995 mm)	44.2 in (1121 mm)
Weight (dry)	1780 lbs (807 kg)	1830 lbs (830 kg)

Rated Power Output

Maximum (1043-7301)

Gross Power 211 BHP (157 kW) @ 2300 RPM
Peak Torque 533 lb ft (723 N·m) @ 1400 RPM

Minimum (1043-7000)

Gross Power 114 BHP (85 kW) @ 2100 RPM
Peak Torque 358 lb ft (485 N·m) @ 1000 RPM

Continuous

Gross Power 153 BHP (114 kW) @ 1800 RPM
Peak Torque 469 lb ft (636 N·m) @ 1400 RPM

Continuous rating is turbocharged rating.
Rating conditions of SAE: 77°F (25°C) and 29.31 in Hg (99kPa) Barometer (Dry)

Equipment Specifications

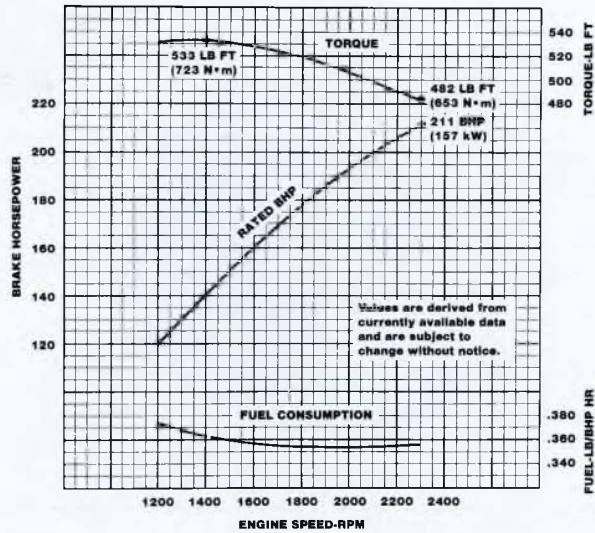
Alternator—12 volt, 42 amp
Crankshaft Pulley
Engine Lifter Brackets
Fan—Suction 18 in, 6 blade (N); 22 in., 6 blade (T)
Flywheel—SAE #1 (N); SAE #2 (T)
Flywheel Housing—SAE #1 (N); SAE #2 (T)
Governor—Variable speed
Lube Oil Cooler
Oil and Fuel Filters
Oil Pan—16°
Starting Motor—12 volt
Turbocharger—TV63, 0.96 A/R
Water Pump

For a complete listing of standard and optional equipment, consult your distributor or authorized Detroit Diesel Corporation representative.

Photograph represents a typical industrial engine

Performance Curve

211 BHP



Rating Explanation

RATED BHP is the power rating for variable speed and load applications where full power is required intermittently.
FUEL CONSUMPTION CURVE shows fuel used in pounds per brake horsepower hour.

POWER OUTPUT guaranteed within 5% at rated ambient conditions.
THIS RATING does not include power requirements for accessory and standard equipment.

DETROIT DIESEL

CORPORATION



13400 Outer Drive, West / Detroit, Michigan 48239-4001
Telephone: 313-592-5000
Telex: 4320091 / TWX: 810-221-1649

3SA364 8803 As technical advancements continue, specifications will change. Litho in USA